

**Owen Sound Minor Hockey
COVID – Return to Play
Ontario Stage 3 – October 14, 2021 – Rev 05**

The Owen Sound Minor Hockey Group is a member of the OMHA operating traditional programs with the Tri-County, Georgian Bay, WOAA and Locally within the city of Owen Sound. With Ontario entering and remaining in Stage 3 (as of August 20, 2021) of the reopening phase, the OMHA will be permitting traditional programming to take place within the province of Ontario with COVID protocols in place.

OSMHG has reviewed the safety plan provided from the City of Owen Sound and in conjunction with the City of Owen Sound and Grey Bruce Public Health the following will be the forecasted operational parameters for OSMHG while in the current stage 3 of reopening.

Program Formats

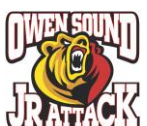
- OSMHG will offer traditional programming to mirror programming offered prior to the 2020 pandemic programming.
- Teams will participate with the Tri-County, Georgian Bay, WOAA & Internal House League programs.
- Roster Sizes will reflect full rosters
- 5 on 5 traditional hockey will be played which includes contact for the divisions that participate in full contact programming.
- Additional COVID guidelines will be in place until directed from OMHA, Public Health and the City of Owen Sound. See below for details.
- Busing will be permitted for the upcoming season. Each team is to develop a safety plan and provide this to OSMHG prior to booking any buses to ensure it achieves the safety guidelines

Vaccination Policy

- OSMHG will be following the OMHA & the PROVINCAL guidelines in relation to COVID vaccine requirements.

Provincial Guidelines

- **City of Owen Sound - Proof of Vaccine**
 - Starting on Wednesday September 22nd the city of Owen Sound (in accordance with the Ontario provincial requirements) will be requiring proof of vaccine upon entry to the Harry Lumley Community Centre & the Julie McArthur Regional Recreation Center.
 - This will be required for all persons over the age of 12 unless a participant from age 12 to 18 (until October 31st as per OMHA).
 - This does not apply to children under the age of 12
 - Currently this does not apply for youth under the age of 18 who are participating in the organized sport.
 - **Please note that as stated below in the OMHA Vaccine - as of November 01, 2021, OSMHG will be following the OMHA guidelines and all participants who are eligible to receive the covid vaccine will be required to provide proof of vaccine to participate in programming.**
 - Please refer to the following link to the City of Owen Sound for additional details on the policy
 - <https://www.owensound.ca/Modules/News/index.aspx?newsId=997bd4f5-5a1a-4333-8d54-15beb62913ff>



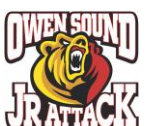
**Owen Sound Minor Hockey
COVID – Return to Play
Ontario Stage 3 – October 14, 2021 – Rev 05**

- **OMHA**
 - **OMHA will be mandating that all eligible participants involved in minor hockey are fully vaccinated for COVID-19 for the upcoming season. All eligible participants are required to be fully vaccinated by October 31, 2021 (including the 14-day period following 2nd vaccine shot.**
 - This policy applies to the following Affected Persons, which includes the following persons:
 - Players born in 2009 or earlier
 - Team Officials (Coaches, Trainers and Managers, etc.)
 - Game Officials (referees, linespersons, timekeepers, etc.)
 - Association Officials (minor hockey association directors, officers, executive and staff)
 - OMHA Officials (directors, officers, executive and staff, including hockey development personnel)
 - Volunteers
 - Instructors (third parties engaged by Associations or Teams to provide specialized instruction (e.g., power skating, goaltending coaching)
 - **At present, this policy does not apply to hockey players born in 2010 or later, or to hockey spectators.**
 - Acceptable documents serving as evidence of COVID-19 vaccination include:
 - A digital or physical Dose Administration Receipt.
 - Medical records signed by a licensed health care provider indicating vaccine name and date(s) of administration.
 - Government verification/language (e.g. Government issued vaccine passport or card)
 - Accommodations to Policy
 - The OMHA will comply with the Ontario Human Rights Code (OHRC) and provide an accommodation to any Affected Person who is unable to be vaccinated for substantiated medical reasons and/or on such other grounds protected under the OHRC, unless such an accommodation cannot be made without inflicting undue hardship on other Affected Persons.
 - Requests will be forwarded to OMHA representative for review and consideration.

COVID PROTOCOLS AS OF October 14, 2021

Entry into Facilities

- OSMHG will utilize the covid check in system that is offered via the City of Owen Sound.
- Each facility within Owen Sound will have a designated entry and exit that everyone must adhere to without exception.
- As of September 22, 2021 all persons over the age of 12 years old (excluding participants as indicated below) are required to provide proof of vaccine upon entry as per the provincial regulations.
- From September 22 to October 31st, 2021, participants age 12 to 18 that are participating in the ice session are **NOT** required to provide proof of vaccine upon entry.
- Commencing November 01, 2021, **ALL** eligible participants (2009 and earlier) are required to show proof of vaccine prior to entry of facilities.
- Masks or face coverings are required prior to entering the facility



**Owen Sound Minor Hockey
COVID – Return to Play
Ontario Stage 3 – October 14, 2021 – Rev 05**

- Facility doors to be opened 30 minutes prior to ice slot and locked once the ice slot commences.
 - Teams & Support Persons are not permitted into facility prior to 30 minutes before ice slot.
- All persons entering the facilities are required to complete the digital check in prior to entry. This can be completed prior to arriving at the ice facilities or upon entry at the designed check in stations.
- The link for check in is:
 - <https://frm-cvd-ca.esolg.ca/Owen-Sound/Screening-Form>
- Everyone will enter the facility and follow the directional traffic flow as indicated at the facilities.
- All persons to enter facility (for both ice pads) via main double entrance doors and exit via the single door facing 10th street

Team Expectations

- Each team (player, staff, and parent) are expected to follow the current regulations. As the situation evolves alternative measures could be required and they are required to follow as provided.
- Teams to appoint 1 person who will be responsible for ensuring everyone on the team (player/support & staff) has completed the check in process.
- Teams, Staff and Parents are required to exit the building within **20 minutes** of player leaving the ice.
- Coaches & Staff must maintain physical distancing with players/parents whenever possible.
- Team meeting if required to be held in controlled environment with physical distancing and face coverings.

Support Persons – As of October 14, 2021

- As of October 14th 2021, the ice facilities within Owen Sound (Bayshore & Rec Center) will not have any restrictions in relation to persons inside the rink and are operating at full capacity.
- While in the facility the support person must adhere to the PPE requirements and practice social distancing.
 - If a person does not adhere to the guidelines they will be asked to leave the facility, and not return until reviewed with the team representative and a member of OSMHG Executive.
- Parent/Spectator must always be respectful of situation and others.

Participants

- Players are expected to wear face covering until they put their helmet on and once completed the session, they are required to put face covering back on until they have left the facility.
- Players will provide their own Water Bottle (no sharing between players, coaches, and on/off ice officials)
- Players always required to be respectful of situation and others.
- Players will refrain from spitting and or chewing gum during their time in the facility.
- No sharing of food or drink at any time while at the facility



**Owen Sound Minor Hockey
COVID – Return to Play
Ontario Stage 3 – October 14, 2021 – Rev 05**

Dressing Room

- All persons (Players & Bench Staff) to wear PPE (face coverings) until their helmets are put on for play and as soon as helmets are removed face coverings to be put back on.
- All participants to abide by the social distancing markers/indicators if present in the change rooms.
- Showers will be open for usage however teams must have exited the building within 20 minutes of the completed ice slot and face coverings are not required while using the showers.

COVID GUIDELINES SUPPLIED FROM HOCKEY CANADA

What do I do if my child tests positive for COVID-19?

- Keep your child home and out of the hockey environment. Your child should not return to hockey activities until all steps outlined by their healthcare provider and public health authority are completed and they are symptom free for 24 hours.

What if a person the participant is residing with such as a parent/family member tests positive for COVID-19? What protocols should we follow?

- If a person the participant is residing with tests positive for COVID–19, the participant and those the participant is residing with will need to stay out of the hockey environment. They should contact their health care provider and public health authority for instructions. Anyone identified as a close contact should stay out of the hockey environment until all public health authority steps have been completed. Anyone who tests positive for COVID-19 should stay out of the hockey environment until all steps outlined by their health care provider and public health authority are completed and they are symptom free for 24 hours.

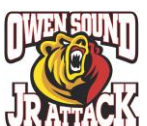
If someone on my child’s team tests positive for COVID-19, will the team be allowed to continue to play hockey?

- If someone on your child’s team tests positive, the public health authority guidelines will determine contact tracing and isolation requirements. It is possible, therefore, that one diagnosis on a team could lead to that team being required to pause hockey activities until the public health authority determines it is safe to return.

What if my child is sick but does not have COVID-19?

- The player should follow up with their health care provider if required and the public health authority if COVID-19 is suspected. They should not return to the hockey environment until all steps outlined by their health care provider and public health authority are completed and they are symptom free for 24 hours.

What should I do if my child is exhibiting signs of COVID-19 but has not been tested?



**Owen Sound Minor Hockey
COVID – Return to Play
Ontario Stage 3 – October 14, 2021 – Rev 05**

- The player should remain out of the hockey environment and contact their health care provider and public health authority for required steps to be taken. They should not return to the hockey environment until all steps outlined by their health care provider and public health authority are completed and they are symptom free for 24 hours.

What should I expect if my child begins to feel ill at a hockey activity?

- If participants do not feel well or have identified respiratory symptoms, ensure they advise team staff immediately and put on a cloth mask. The participant should immediately go home and follow up with their health care provider and the public health authority if COVID-19 is suspected. They should not return to the hockey environment until all steps outlined by their health care provider and public health authority are completed and they are symptom free for 24 hours.

If a participant is currently isolating, can they come to the facility for hockey?

- If a participant or person they are residing with is in isolation, neither the participant nor those they are residing with can be in the hockey environment until all public health authority requirements are met.

Return to Sport after a confirmed instance of COVID-19 in Hockey

The Ontario Hockey Federation feels that the protocols that have been established Nationally, by our Members, the local associations and the OHF will reduce the chance of transmission within our programming. The OHF also recognizes that there is an aspect of inevitability that an athlete or coach within our programming will at some point have a confirmed positive case of COVID 19 and as such protocols are required for this instance.

If anyone becomes ill at a hockey, they will:

- Be immediately separated from others, in a separate room if possible, until they can go home
- Be provided with a medical mask
- Continue to be supervised according to the local hockey associations usual policy
- Be asked to maintain physical distancing
- Be unable to take team or public transportation

If your child becomes ill at hockey, they must go home;

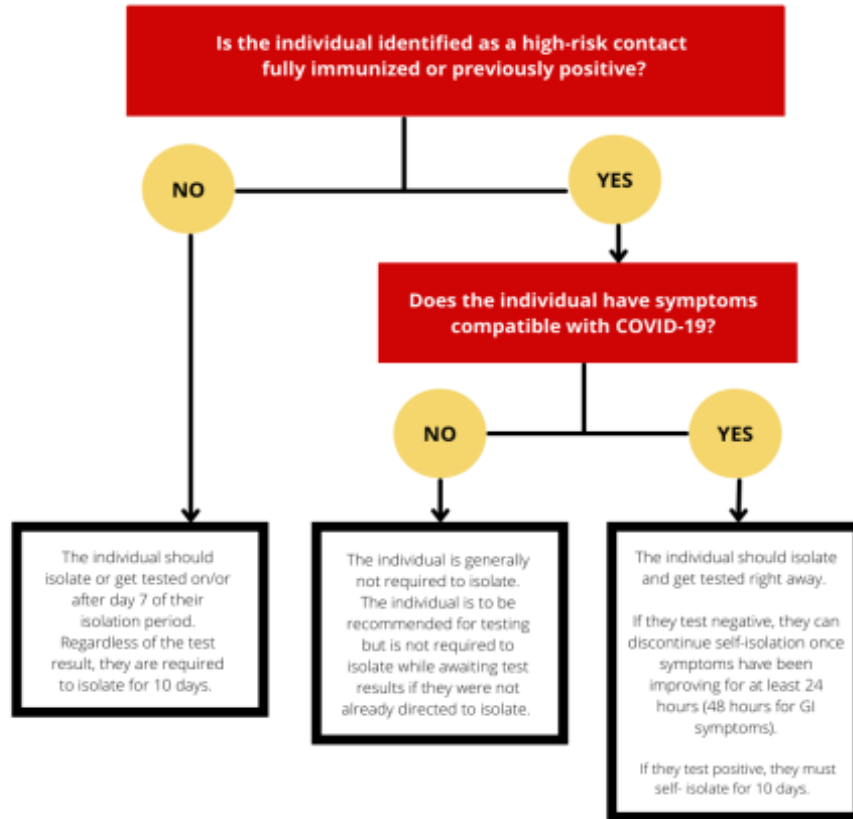
- The team or local hockey association will contact you and you'll need to arrange for them to get home, in a way that does not include public transportation.
- We encourage you to have a plan for this ahead of time. you should consult their health care provider.
- They may recommend your child [get tested for covid-19](#).
- If you or your child are tested for covid-19, [it's easy to get the results](#).
- If a COVID-19 case is confirmed at hockey; the local public health unit will determine what happens and based on that direction the following flow charts will govern the Return to Programming



Owen Sound Minor Hockey COVID – Return to Play Ontario Stage 3 – October 14, 2021 – Rev 05

Flow Chart 1: Case and Contact Management in Hockey for High-Risk Contact

Adapted from Appendix 11 of [Management of Cases and Contacts Of COVID-19 in Ontario by the Government of Ontario](#)



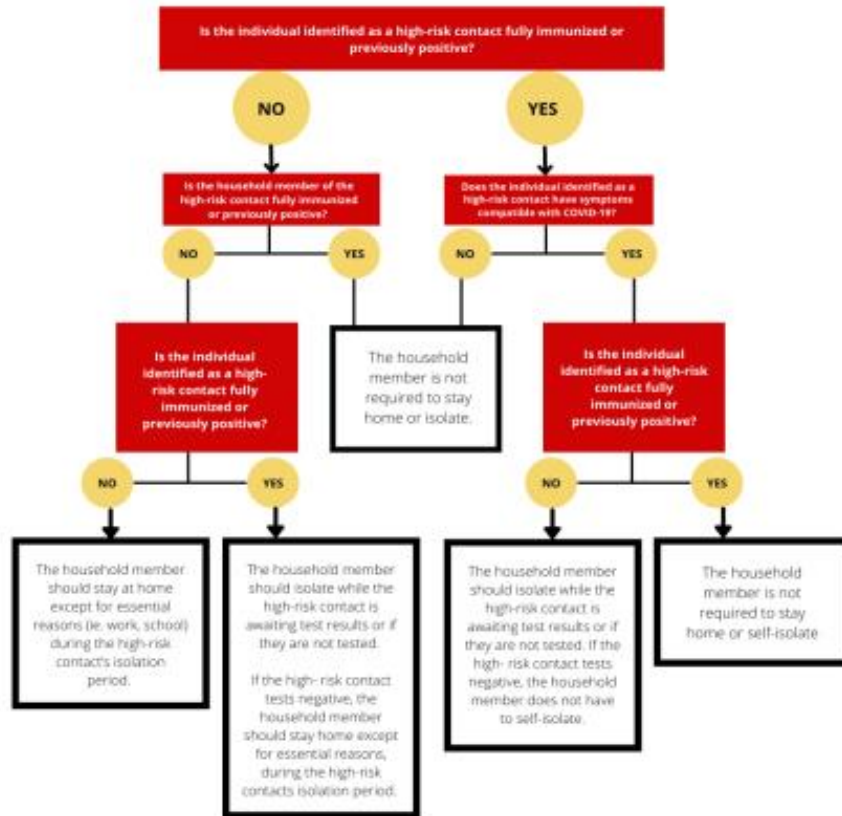
For the purposes of case/contact/outbreak management, an individual is defined as fully immunized ≥ 14 days after receiving their second dose of a two-dose COVID-19 vaccine series or their first dose of a one-dose COVID-19 vaccine series that is listed for emergency use by the World Health Organization or approved by Health Canada. Individuals who are immunocompromised are excluded from this definition, in accordance with COVID-19 Fully Immunized and Previously Positive Individuals: Case, Contact and Outbreak Management Interim Guidance. For the purposes of case/contact/outbreak management, an individual is defined as previously positive if they were a confirmed case of COVID-19 where their initial positive result was ≤ 90 days ago AND they have been cleared from their initial infection. Individuals who are immunocompromised are excluded from this definition, in accordance with COVID-19 Fully Immunized and Previously Positive Individuals: Case, Contact and Outbreak Management Interim Guidance.



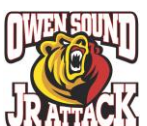
Owen Sound Minor Hockey COVID – Return to Play Ontario Stage 3 – October 14, 2021 – Rev 05

Flow Chart 2: Case and Contact Management in Hockey for Household Members of High-Risk Contacts

Adapted from Appendix 11 of [Management of Cases and Contacts Of COVID-19 in Ontario by the Government of Ontario](#)



For the purposes of case/contact/outbreak management, an individual is defined as fully immunized ≥ 14 days after receiving their second dose of a two-dose COVID-19 vaccine series or their first dose of a one-dose COVID-19 vaccine series that is listed for emergency use by the World Health Organization or approved by Health Canada. Individuals who are immunocompromised are excluded from this definition, in accordance with COVID-19 Fully Immunized and Previously Positive Individuals: Case, Contact and Outbreak Management Interim Guidance. For the purposes of case/contact/outbreak management, an individual is defined as previously positive if they were a confirmed case of COVID-19 where their initial positive result was ≤ 90 days ago AND they have been cleared from their initial infection. Individuals who are immunocompromised are excluded from this definition, in accordance with COVID-19 Fully Immunized and Previously Positive Individuals: Case, Contact and Outbreak Management Interim Guidance.



**Owen Sound Minor Hockey
COVID – Return to Play
Ontario Stage 3 – October 14, 2021 – Rev 05**

Covid-19 incident reporting

The following processes have been identified for incident reporting in the case that a participant has tested positive for COVID-19.

If a participant tests positive,

- Public Health will automatically be notified by the entity that conducted the testing.
- Public Health will be in contact with the individual to facilitate contact tracing, at this time Public Health will inform teammates and coaches through the contact tracing process.
- It is recommended that the participant or the participant's guardian informs their coaches and teammates, however, they cannot be compelled to do so.

Participant Tests Positive and is Willing to Disclose Information:

- If the participant chooses to advise their coach, the coach should ask the participant to contact Public Health and give Public Health permission to discuss the matter with the coach. If the participant agrees to do that, the coach can then seek guidance directly from Public Health.

Participant Tests Positive and is Unwilling to Disclose Information:

- If the coach becomes aware of a positive test among their players, but does not know the identity of the player, or if the player does not give the coach permission to discuss the matter with Public Health, the coach can still contact Public Health to try to obtain general advice.
- The coach should also discuss the matter with the relevant hockey association or Member (not revealing the participant's name if they are aware of who has tested positive) to decide on a course of action with regard to future team activities.

Conclusion

OSMH will continue to work with the OMHA, City of Owen Sound and the Grey Bruce Public Health unit as this situation evolves and parameters require modifications or alterations. Our focus for this season will be **SAFETY** and **FUN** while providing our participants the ability to continue their development as players and persons.

Stay Safe

OSMH

